

Mission Gallery

Maker in Focus | Graduate Showcase

Gwneuthurwr mewn Ffocws | Sioe Graddedigion

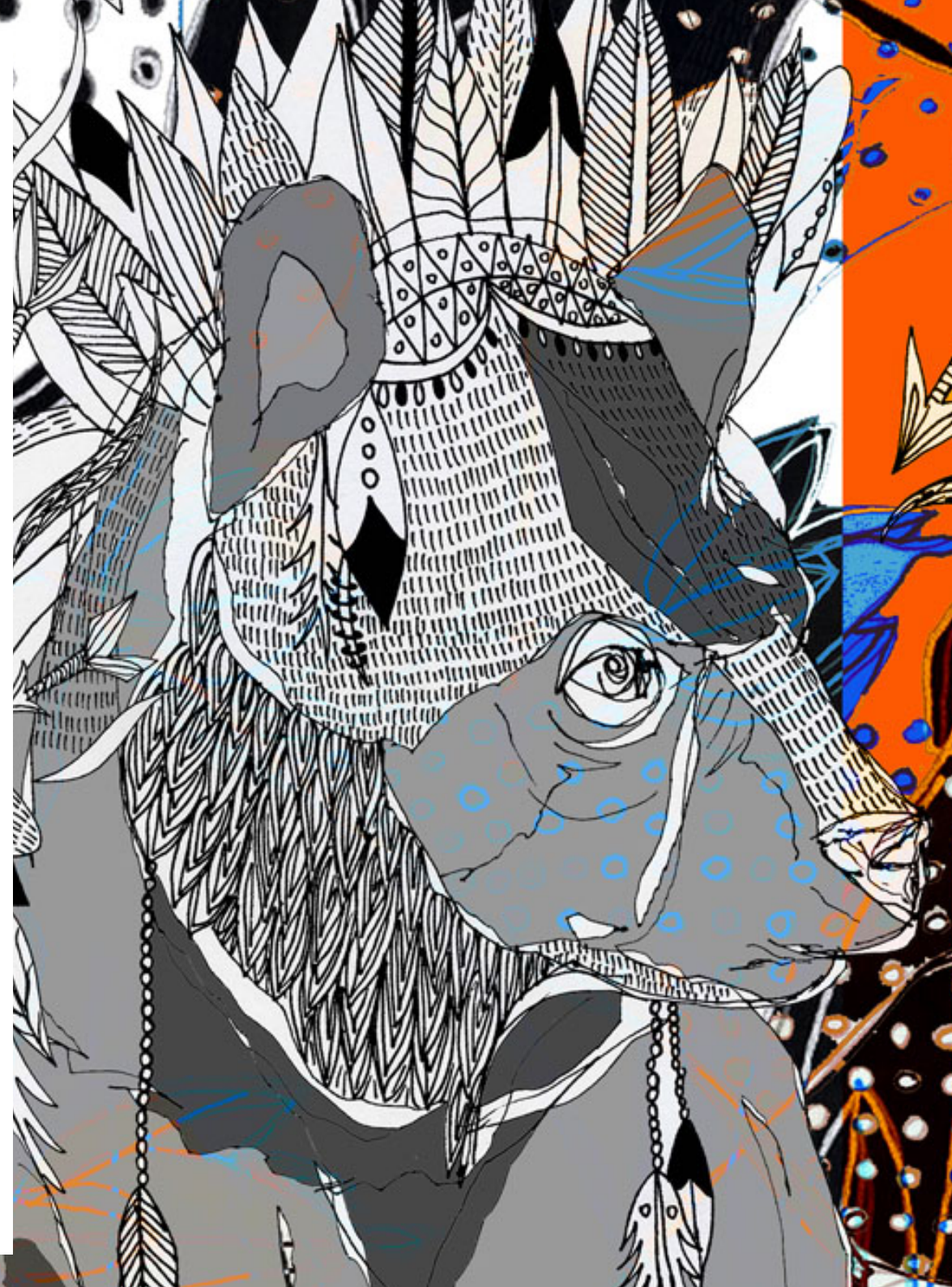


Image | Delwedd : Sophie Rees

Maker in Focus | Graduate Showcase

5 August - 14 September 2014

To nurture development and push the boundaries of Visual and Applied Art.

The aim of *Maker in Focus* is to present excellence in applied art. Traditionally this has been used to showcase work from a single maker, yet following a tour of graduate shows and New Designers it soon became apparent that choosing one emerging maker for this Graduate Showcase was an impossible task. Following Mission Gallery's established reputation for supporting artists and makers, it was decided to award five graduates from Wales and beyond with this Showcase opportunity, the first of hopefully many.

These graduates have showcased excellence within their specialist field; highlighting those that are pushing the boundaries of Craft and Applied Art traditions.

The Graduates are:

Esme Parsons	UCA Rochester
Harriet McCormick	Cardiff School of Art & Design
Jaki Coffey	National College of Art & Design
Sophie Rees	UWTSD Swansea Metropolitan
Sophie Southgate	Cardiff School of Art & Design

Gwneuthurwr mewn Ffocws | Sioe Graddedigion

5 Awst - 14 Medi 2014

I feithrin datblygiad a gwthio ffiniau celf gweledol a chymhwysol.

Bwriad *Gwneuthurwr mewn Ffocws* yw cyflwyno arbenigrwydd yng nghelf gymhwysol. Yn draddodiadol, mae'r cyfle hwn wedi ei ddefnyddio i arddangos gwneuthurwr unigol, ond yn dilyn teithiau o amgylch sioeau gradd a New Designers daeth yn amlwg fod dewis un gwneuthurwr graddedigol i'r sioe yma yn mynd i fod yn dasg amhosib. Gan ddilyn enw da Oriel Mission am gynorthwyo gwneuthurwyr ac artistiaid newydd, penderfynnwyd gwobrwyo pum graddedigion o Gymru a phellach gyda'r cyfle yma, y cyntaf o lawer gobeithio.

Mae'r graddedigion yma wedi arddangos arbenigedd yn eu maes arbenigol, gan ddangos rhai sydd wedi gwthio ffiniau traddodiadau Crefft a Chelf Gymhwysol.

Y Graddedigion yw:

Esme Parsons	UCA Rochester
Harriet McCormick	Ysgol Gelf a Dylunio Caerdydd
Jaki Coffey	Coleg Genedlaethol Celf a Dylunio
Sophie Rees	UWTSD Metropolitan Abertawe
Sophie Southgate	Ysgol Gelf a Dylunio Caerdydd



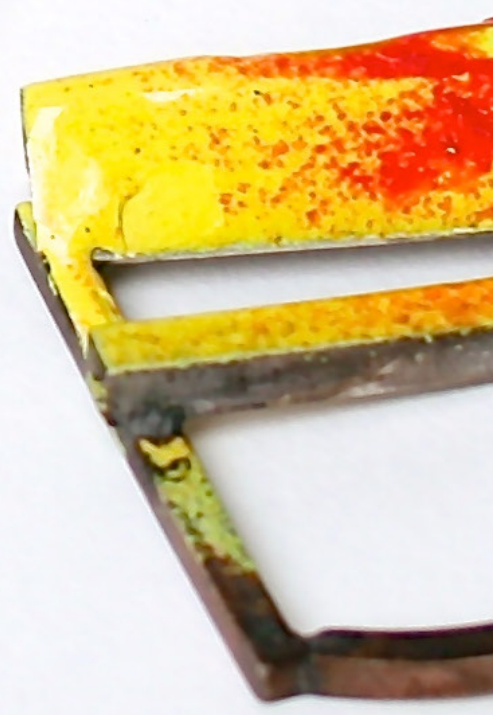
- Esme Parsons UCA Rochester
- Harriet McCormick Cardiff School of Art & Design
Ysgol Gelf a Dylunio Caerdydd
- Jaki Coffey National College of Art & Design
Coleg Genedlaethol Celf a Dylunio
- Sophie Rees UWTSD Swansea Metropolitan
UWTSD Metropolitan Abertawe
- Sophie Southgate Cardiff School of Art & Design
Ysgol Gelf a Dylunio Caerdydd

Esme Parsons

Esme Parsons, is a UCA Rochester BA (Hons) graduate of Silversmithing, Goldsmithing & Jewellery. She creates contemporary jewellery from enamel and precious metals, making both gallery pieces and pieces for every day wear. Urbanisation is a collection inspired by many walks in London. The jewellery is an examination of architecture, often the unacknowledged areas, such as satellite dishes, sign posts and barbed fencing, she also sources inspiration from the city's vibrant colours.

Graddedigwr BA (Hons) Gwaith Arian, Gwaith Aur a Gemwaith UCA Rochester yw Esme Parsons. Mae'n creu gemwaith cyfoes o enamel a metelau drudfawr, gan greu darnau oriel a darnau i'w gwisgo bob dydd. Casgliad wedi ei ysbrydoli gan deithiau yn Llundain yw Urbanisation. Archwiliad o bensaerniaeth yw'r gemwaith yma, yn aml y llefydd di-gydnabod, y soseri lloeren, arwyddion a ffensiau bigog, mae hefyd yn cymryd ysbrydoliaeth o liwiau llachar y ddinas.

www.facebook.com/esmeparsonsjewellery



Harriet McCormick

Folklore, mythology and metamorphosis are inspirations used by Harriet within her work and narrative plays a central role within all of this. With a love and appreciation for nature, she transforms objects such as antlers and deer feet into ceramic, as well as using taxidermy elements. The collection portrays the curiosities and the unknown of traditional folklore rituals and ceremonial tools, objects that speak of a metamorphic quality. She would like to invite you to use these objects as tools to create your own narratives and ideas of their purpose and derivation.

Mae chwedlau, mytholeg a metamorffosis oll yn ysbrydoliaethau a ddefnyddia Harriet o fewn ei gwaith ac mae naratif yn chwarae rhan allweddol ynghanol hwn. Gyda chariad a gwerthfawrogiad am natur, mae'n trawsffurfio gwrthrychau fel cym a traed ceirw i serameg, ynghyd a defnyddio nodweddion tacsidermi. Mae'r casgliad yn cyfleu yr anwybod am ddefodau traddodiadol chwedlonol ac offer seremoni, gwrthrychau sydd yn sôn am rinweddau metamorffig. Hoffai eich gwahodd i ddefnyddio'r gwrthrychau fel arfau gan greu eich naratifau a syniadau eich hun am eu pwrpas a'u tarddiad.

www.facebook.com/HarrietMcCormickCeramics

www.harrietmccormickceramics.com



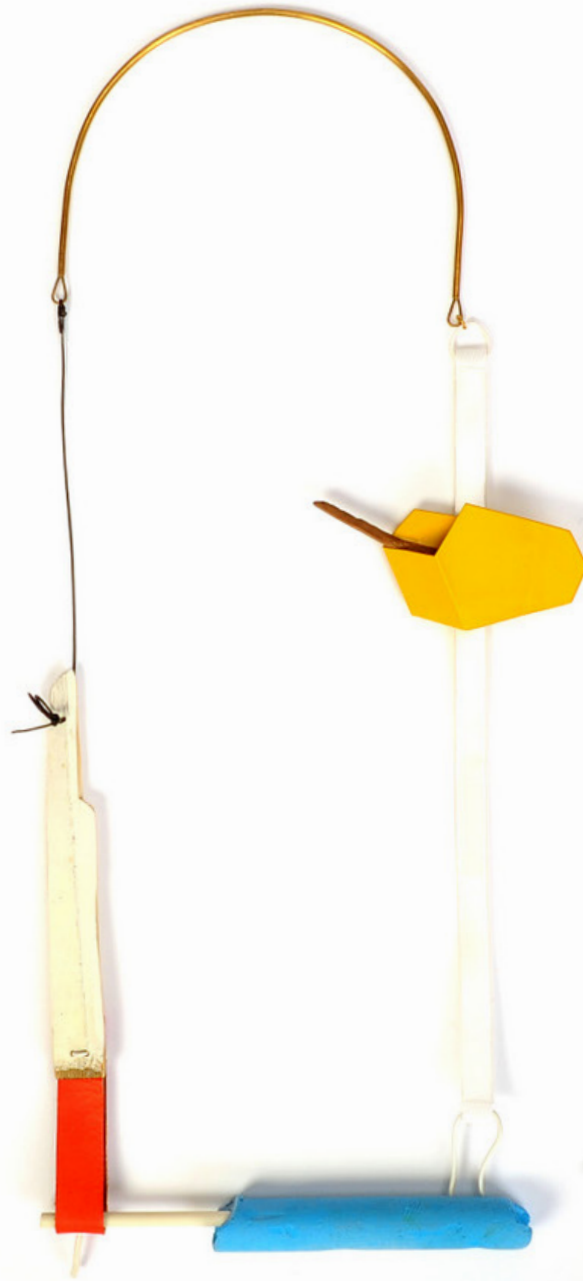
Jaki Coffey

A National College of Art & Design Jewellery & Metalwork graduate, Coffey enjoys exploring colour, found objects and narrative and seeing how these themes can be used to create a playful aspect to wearable pieces. Using a variety of materials including copper, steel, magnets and found objects she has created a range of jewellery to delight and amuse; yellow skips that the wearer can fill with 'rubbish'. By using found objects within her work she aims to question the notion of 'preciousness'.

Graddedigwr cwrs Gemwaith a Gwaith Metel Coleg Genedlaethol Celf a Dylunio, mae Coffey yn mwynhau archwilio lliw, gwrthrychau darganfedig a naratif a sut all y themau hyn cael eu defnyddio i greu naws chwareus i ddarnau gwisgol. Gan ddefnyddio amrywiaeth o ddeunyddiau gan gynnwys copor, haearn, magnetau a gwrthrychau darganfedig mae hi wedi creu casgliad i ddifyrru; sgipiau melyn gall y gwisgwr lenwi â 'sbwriel'. Wrth ddefnyddio gwrthrychau darganfedig o fewn ei gwaith mae'n cwestiynu'r syniad o 'werth'.

www.jakicoffey.com

Photography | Delwedd: Damien Maddock



Sophie Rees

Sophie's work focuses on animals, narrative and nostalgia; with pen and hand she creates creatures of dreams. An applied artist and illustrator, her diverse drawings are unusual and detailed - designs that can be transferred to a range of products with quirky and original outcomes. A strong printmaker, Sophie traditionally prints her designs using silkscreen. The printing process allows her to transform work into a world of endless possibilities, giving her the feeling that the design is immortal and powerful.

Mae gwaith Sophie yn ffocysu ar anifeiliaid, naratif ac hiraeth, gyda phen a llaw mae'n creu creaduriaid ei breuddwydion. Artist gymhwysol a darluniwr, mae ei darluniau yn unigryw a manwl – dyluniadau sydd yn gallu cael eu trawsnewid i nifer o ganlyniadau hynod a gwreiddiol. Yn brintwr cryf, mae Sophie yn printio'i dyluniadau'n draddodiadol gan ddefnyddio sgrin sidan. Mae'r broses printio yn galluogi iddi trawsffurfio'i gwaith i fyd o bosibiliadau di-ddiwedd, gan adael i'w dyluniadau deimlo'n dragwyddol a nerthol.

sophie-rees.tumblr.com



Sophie Southgate

Sophie's practice is an on-going exploration of the object and the vessel, in both the contexts of sculpture and functional ceramics. Her work moves between the boundaries of art and design, challenging our preconceptions and understanding of contemporary ceramics. She takes inspiration from the landscape, paring it back to abstract interpretations of space through basic geometric forms. She utilises colour and negative space to engage the audience and play with perception. Her work is ambiguous in nature and open to interpretation, raising questions about material and process.

Archwiliad parhaol o wrthrych a llestr yw ymarfer Sophie, yng nghyd-destun serameg cerfluniol a defnyddiol. Mae ei gwaith yn symud rhwng ffiniau celf a dylunio, gan herio'n rhagdybiaethau a deallusrwydd o serameg gyfoes. Daw'r ysbrydoliaeth o dirlun, eu symleiddio i ddehongliadau abstract o wagle trwy ffurfiau geometrig. Defnyddia lliw a gwagle negatif i ymrwymo'r gynulleidfa a chwarae gyda chanfyddiad. Mae ei gwaith yn amwys mewn natur ac yn agored i ddehongliad, gan ofyn cwestiynau am ddefnydd a phroses.

www.sophiesouthgate.com

sophiejsouthgate.wordpress.com



Mission Gallery
Gloucester Place
Maritime Quarter
Yr Ardal Forol
Swansea SA1 1TY
Abertawe SA1 1TY

01792 652016
info@missiongallery.co.uk
www.missiongallery.co.uk

Open Tuesday - Sunday 11am - 5pm
Ar agor dydd Mawrth i ddydd Sul 11yb - 5yp

Closed Mondays, Open Bank Holidays
Ar gau bob dydd Llun, Ar agor Gwyliau Banc

Admission Free
Mynediad am ddim



Mission Gallery

Design | Dylunio: Matthew Otten
www.matthewotten.co.uk