



CIVIC2014



Architects and artists in conversation, making work inspired by the city and its possibilities.

CIVIC is an exhibition about Swansea, about psychogeography, history and cultural heritage, design and how we can develop new creatively led, sustainable ideas for the future of the city.

A Mission Gallery Exhibition, Curated by Bella Kerr

Owen Griffiths & Andrew Nixon (Powell Dobson)

Anna Barratt & Huw Griffiths

Jason & Becky & Niall Maxwell

Catriona Ryan & Lindsay Halton

www.facebook.com/collaborativeconversations

civic2014.wordpress.com

www.missiongallery.co.uk

Penseiri ac artistiaid yn sgysio, yn creu gwaith wedi eu hysbrydoli gan y ddinas a'i bosibiliadau.

Srddangosfa am Abertawe yw CIVIC, am seicdaeryddiaeth, hanes ac etifeddiaeth diwylliannol, dylunio a sut allwn ddatblygu syniadau creadigol newydd, cynhaliol am ddyfodol y ddinas.

Oriel Mission Arddangosfa, Curadur gan Bella Kerr

Owen Griffiths & Andrew Nixon (Powell Dobson)

Anna Barratt & Huw Griffiths

Jason & Becky & Niall Maxwell

Catriona Ryan & Lindsay Halton

www.facebook.com/collaborativeconversations

civic2014.wordpress.com

www.missiongallery.co.uk

Introduction by Bella Kerr, Curator of CIVIC

PSYCHO-GEOGRAPHICAL READINGS OF THE CITY AND LITERARY AND HISTORICAL DEPICTIONS WERE CONSIDERED, AS QUESTIONS EMERGED TO REFRAME THE CITY

CIVIC - Considering the City: Architecture, Art and the Urban Environment

'When I decided to step out of the field of architecture, my first impulse was not to add to the city, but more to absorb what was already there, to work with the residues, or with the negative spaces, the holes, the spaces in between.'

- Francis Alys

4 architectural practices, 3 artists and a writer were asked to propose responses to the city, pairing each architect with another practitioner to create four partnerships with varying levels of collaboration or contact.

The exhibitors devised a number of walks prior to the exhibition to develop the collaborations and discover - or rediscover - the city and reveal the problems, cultural richness, practical needs and histories that might fuel their proposals.

Psycho-geographical readings of the city and literary and historical depictions were considered, as questions emerged to reframe the city:

Could the space between the practices of architecture, writing and visual art be utilised to find or capture something of the city - perhaps the lost or forgotten places? Do we simply need to change the way we see and use city space - with small or radical 'rule' changes - to revolutionise our experience? Are brief, recurrent or durational non-material interventions a more useful tool for change than the permanence of concrete structures? How can artists, writers and architects work together to mediate between the virtual, conceptual and the material? Can the idea of 'knowing' the city provided a counterbalance to the notion of urban space as problem?

Cyflwyniad gan Bella Kerr, Curadur CIVIC

YSTYRIED DARLLENIAU SEICO-DAEARYDDOL O'R DDINAS A DARLUNIAU LLENYDDOL AC HANESYDDOL, FEL YMDDENGYS CWESTIYNAU I AILFFRAMIO'R DDINAS

Civic – Ystyried y Ddinas: Pensaerniaeth, Celf a'r Amgylchedd Ddinesig

'Pan benderfynais gamu allan o'r maes pensaernïol, fy nghymelliad cyntaf oedd nid adio i'r ddinas, ond yn hytrach defnyddio beth oedd yno eisioes, i weithio gyda'r gweddillion, neu gyda'r gwagleoedd negatif, y tyllau, y rhyng-gwagleoedd.'

- Francis Alys

Gofynnwyd 4 ymarfer pensaernïol, 3 artist ac ysgrifennydd i gynnig ymatebion i'r ddinas, gan bartneri pob pensaer gydag ymarferwr arall i greu pedwar partneriaeth gyda lefelau amrywiol o gydweithrediad neu gysylltiad.

Creodd yr arddangoswyr nifer o lwybrau cyn yr arddangosfa i ddatblygu cydweithrediad ac i ddarganfod – neu ailddarganfod – y ddinas a datgelu'r problemau, cyfoeth diwyllianol, anghenion ymarferol a hanesion gellid cryfhau eu cynigion.

Ystyried darlenniadau seico-daearyddol o'r ddinas a darluniau llenyddol ac hanesyddol, fel ymddengys cwestiynau i ailfframio'r ddinas:

Gall y gwagle rhwng bensaerniaeth, ysgrifen a chelf gweledol ei ddefnyddio i ddarganfod neu disgrifio y ddinas – efallai'r llefydd coll neu angof? A oes angen i ni newid y ffordd rydym yn gweld a defnyddio'r ddinas – gyda newidiadau bach neu newid 'rheolau' radical – i chwyldroi ein profiadau? A yw mymrreath byr, cylchol neu barhaol di-ddeunydd yn dechlyn fwy defnyddiol am newid na sefydlogrwydd strwythurau concrit? Sut gall artistiaid, ysgrifenyddwyr a penseiri weithio gyda'i gilydd i ganoli rhwng y rhinweddol, cyd-destunol a'r deunyddiol? Gall y syniad o 'adnabod' y ddinas ddarparu cydbwysedd gyda'r syniad o'r gwagle dinesig fel problem?



Owen Griffiths, Artist

CYBER REALITIES AND INFORMATION SHARING CREATE VIRTUAL COMMONS AND SPACES OF INTERACTION SO HOW DO WE DESIGN NEW PHYSICAL PUBLIC SPACES?

'The Lure of the Local is the pull of place that operates on all of us, exposing our politics and our spiritual legacies. It is the geographical component of the psychological need to belong somewhere, one antidote to a prevailing alienation'

- Lucy Lippard

'The city changes quicker than the human heart'

- Baudelaire

Now it's the digital or cyber world that changes quicker. So how do second cities, towns and smaller urban spaces become successful people lead spaces or commons? How can they be leaders or inspiring environments to be in? Cyber realities and information sharing create virtual commons and spaces of interaction so how do we design new physical public spaces, new buildings or social / shared housing for the future? What roles do the slow movements of greening, gardening have and what about the importance and need for spaces to play, protest and picnic?

These aren't esoteric questions but a design brief to challenge continual alienation, of bad planning, of privatisation, exploring the vernacular and responding to the collective.

Owen Griffiths, Artist

REALITI RHYDWEITHIOL A RHANNU GWYBODAETH YN CREU COMIN RHINWEDDOL A LLEFYDD I RHYNGWEITHIO FELLY SUT GWNAWN DDYLUNIO GWAGLEOEDD CYHOEDDUS FFISEGOL NEWYDD?

'Hud y Lleol yw atyniad lle sydd yn gweithio arnynt oll, gan ddinoethi gwleidyddiaeth ac etifeddiaeth sbrydol. Cydran daearyddol o'r angen seicolegol i berthyn rhywle, un gwrthwenwyn i estroniad trechol'

- Lucy Lippard

'Mae'r ddinas yn newid yn gynt na'r galon'

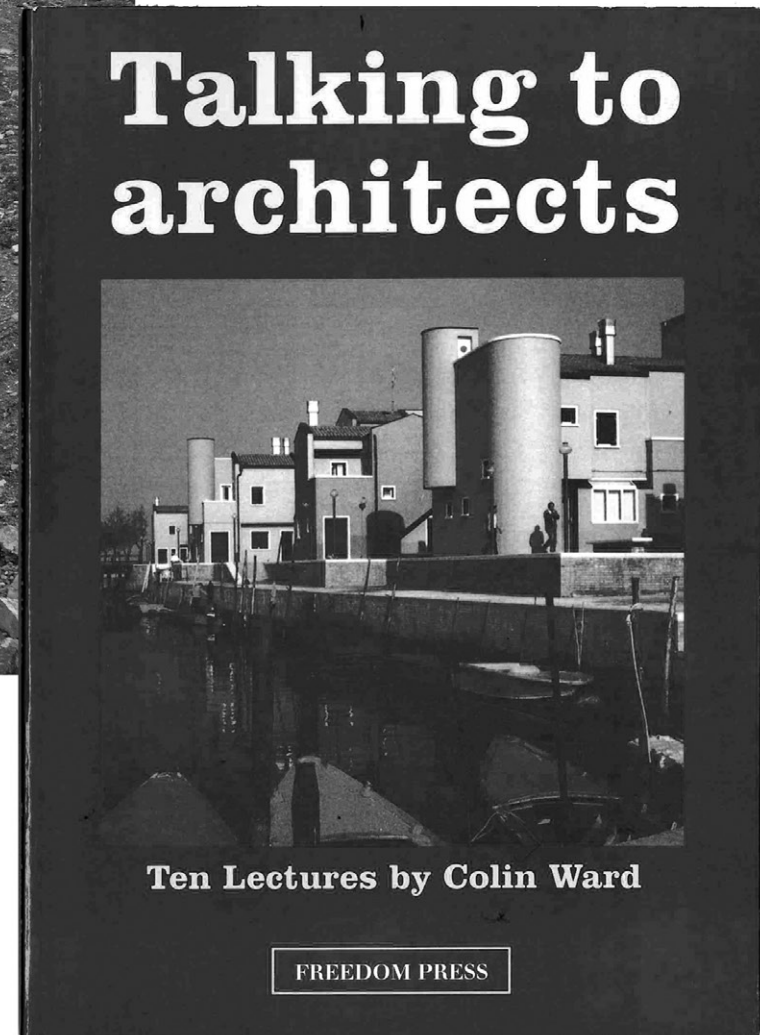
- Baudelaire

Nawr y byd digidol neu rinweddol sydd yn newid yn gynt. Felly sut daw ail ddinasoedd, trefi a gwagleoedd dinesig llai yn lefydd neu gomin llawn pobl llwyddiannus? Sut allent fod yn amgylcheddau arweiniol neu ysbrydoledig? Realiti rhydweithiol a rhannu gwybodaeth yn creu comin rhinweddol a llefydd i ryngweithio felly sut allwn ddylunio gwagleoedd cyhoeddus ffisegol newydd, adeiladau newydd neu tai cymdeithasol/cyfrannol i'r dyfodol? Beth yw rhan y symudiadau araf o wyrddio, garddio a beth am y pwysigrwydd a'r angen am lefydd i chwarae, brotestio a bwyta?

Nid cwestiynau cyfrinachol ond briff dylunio i herio estroniad parhaol, cynllunio gwael, o breifateiddio, gan archwilio'r brodorol ac ymateb i'r casgliad.



***‘There goes
the neighbourhood...’***



Andrew Nixon (Powell Dobson), Architect

THE SWANSEA CITY ROOFS PROJECT AIMS TO STIMULATE DISCUSSION ABOUT THE INCLUSION OF SUSTAINABLE STRATEGIES

Established in 1966, Powell Dobson is an architectural practice with offices in Swansea, Cardiff and London, with expertise in a wide range of building types and sectors, from retail, leisure and culture, through to schools, further & higher education, health and all types of residential and mixed use development.

Powell Dobson's interest in green roof technologies stems from core commitments to embedding sustainable design principles in all projects from inception.

Our engagement in the CIVIC project has led us to focus on key strategies for sustainability within the immediate city centre. In particular, we are interested in researching practical and sustainable measures for existing, underused flat roofs as part of a holistic regeneration strategy for the city.

Did you know that there are acres of underused spaces above your head as you walk through the city? Much of Swansea's rooftop space lies empty and unused. These rooftops offer endless opportunities to revitalise the city centre, by providing new public spaces, gardens, wildlife retreats and food production.

The Swansea city roofs project aims to stimulate discussion about the inclusion of sustainable strategies that can be incorporated into the city centre's extensive building stock, in an accessible and engaging way.

As a visitor or resident to Swansea city centre, how would you like to see empty and underused flat roofs being used? What sort of practical things could be done on a flat roof? Imagine if there were no boundaries to what could be achieved: what would you propose? Could Swansea's roofspaces become places to grow fruit and vegetables or start beekeeping? Perhaps they could support garden allotments? Or, perhaps they could be linked together to form a large attraction or destination: an amusement park, sculpture garden, outdoor museum or city beach? Could they help to restore natural habitats for plants and insects, by

providing spaces for wildlife conservation? Perhaps the roofs could combine wind and solar power technologies, helping promote a sustainable future for the city? These are just a few ideas, but to get a full picture of what's possible, just let your imagination run. Your ideas could help to find new uses for Swansea's rooftops, helping to provide interesting and innovative solutions and combining exciting and environmentally-friendly ways to promote Swansea's cultural values and sustainability goals.

The project's engagement with the public through a number of events will provide an analytical and explorative canvas, considering possibilities for rooftops as imaginative public spaces and urban farms, and investigating conservation measures such as rainwater harvesting and electricity production through small-scale solar and wind farms.

It is hoped that the involvement of members of the public sharing ideas and aspirations will act as a springboard to engagement of developers, landlords, tenants and the City and County of Swansea in exploring practical measures that can be adopted to re-imagine underused flat roofs, offering the city roofscape a new lease of life by providing distinctive, flexible spaces to promote Swansea's culture, traditions and sustainability targets.

Andrew Nixon (Powell Dobson), Pensaer

MAE PROSIECT TOION DINAS ABERTAWA YN BWRIADU SBARDUNO TRAFODAETH AM GYNHWYSIAD STRATEGAETHAU CYNHALIOL

Sefydlwyd Powell Dobson yn 1966, ymarfer pensaernïol gyda swyddfeydd yn Abertawe, Caerdydd a Llundain, gyda profiad mewn amrywiaeth o sectorau a ffurfiau adeiladol, o adwerthu, hamdden a diwylliant, i ysgolion, addysg pellach ac uwch, iechyd a phob math o ddatblygiadau preswyl ac aml-ddefnyddiol.

Mae diddordeb Powell Dobson yn nhechnoleg toion gwyrdd yn dod o ymrwymiad craidd i fewnosod moesau cynhaliol ym mhob prosiect o'r dechreuad.

Mae ein ymrwymiad i brosiect CIVIC wedi ein harwain i ffocysu ar strategaethau allweddol am gynhaladwyedd o fewn canol y ddinas. Yn enwedig, mae gennym ddiddordeb ymchwilio mesuriadau ymarferol a chynhaliol am fodolaeth toion fflat heb ddefnydd fel rhan o strategaeth aileni cyfannol y ddinas.

Fel cerddwch o amgylch y ddinas, a ydych chi'n gwybod bod yna erwi o wagleoedd heb ddefnydd uwch eich pen? Mae llawer o doion Abertawe yn gorwedd yn wag, heb eu defnyddio. Mae'r toion yma yn cynnig cyfleoedd diddiwedd i ailfwio canol y ddinas, gan ddarparu llefydd cyhoeddus newydd, gerddi, encil bywyd gwyllt a chynhyrchiad bwyd.

Bwriad Prosiect toion dinas Abertawe yw i sbarduno trafodaeth am gynhwysiad strategaethau cynhaliol gall ymgorffori stoc adeiladol eang canol y ddinas, mewn ffordd hygyrch a chysylltol.

Fel ymwelwr neu drigolyn canol dinas Abertawe, fel hoffwch chi weld y toion gwag heb ddefnydd yn cael eu defnyddio? Pa fath o bethau ymarferol gellid eu gwneud ar dô fflat? Dychmygwch nad oes unrhyw ffiniau i beth ellid ei gyflawni: beth gynigwch chi? Efallai gall toion Abertawe ddod yn llefydd i dyfu ffrwyth a llysiau neu ddechrau cadw gwenyn? Efallai gallent gefnogi gerddi a lotments? Neu, efallai gallent eu cysylltu i ffurfio atyniad mawr neu ben taith: parc atyniadol, gardd cerffuniol, amgueddfa allanol neu draeth dinesig? Gallent helpu atgyweirio cynefinoedd naturiol i blanhigion a gwybed, wrth

ddarparu llefydd am warchod bywyd gwyllt? Efallai gall y toion gyfuno technolegau pŵer gwynt a solar, gan helpu hysbysu dyfodol cynhaliol i'r ddinas? Dyma rhai syniadau, ond i gael darlun llawn o beth sydd yn bosib, gadewch i'ch dychymyg fynd yn wyllt. Gall eich syniadau chi helpu darganfod defnyddiau newydd i doion Abertawe, gan helpu darparu atebion diddorol a dyfeisiol trwy gyfuno ffyrdd cyffrous ac amgylcheddol i hysbysu moesau diwylliannol a thargedau cynhaliol Abertawe.

Bydd ymrwymiad y prosiect gyda'r cyhoedd trwy nifer o weithgareddau yn darparu cynfas dadansoddol ac archwiliol, gan ystyried posibilrwydd y toion fel llefydd cyhoeddus dychmygol a ffermydd trefol, ac ymchwilio mesuriadau cadwraeth fel cynhaefu dŵr glaw a chynhyrchu trydan trwy ffermydd bach gwynt a solar.

Y gobaith yw bydd rhannu syniadau a dyheadau aelodau'r cyhoedd yn actio fel ddolen gyswllt i ymrwymiad datblygwyr, perchnogion, tenantiaid a Dinas a Sir Abertawe yn archwilio mesuriadau ymarferol gellid eu mabwysiadu i ailddychmygu toion fflat heb ddefnydd, gan gynnig tirlun y ddinas bywyd newydd trwy ddarparu llefydd.



Andrew Nixon (Powell Dobson)

Powell Dobsons's interest in green roof technologies stems from core commitments to embedding sustainable design principles in all projects from inception.

The Swansea city roofs project aims to stimulate discussion about the inclusion of sustainable strategies that can be incorporated into the city centre's extensive building stock, in an accessible and engaging way.

Anna Barratt, Artist

SWANSEA IS AN IMAGINARY CITY...
A LANDSCAPE OF AERIALS, TALL THIN POINTERS...
TRANSMITTERS AND RECEIVERS

*'Incapable of magic architecture , we made art out
of our deprivation'*

- Patrick Keiller,
The View from the Train – Cities and Other Landscapes, 2013

Swansea is an imaginary city...a landscape of aerials, tall thin pointers...
transmitters and receivers. I project myself onto the roofs, astral projection....
The Master and Margherita - witch night travels . The tripods.....between
malevolence, all seeing – their height - power. Or the Sun Alliance roof aerials,
shaped like grey Duplo blocks. What is transmitted and received...

Anna Barratt, Artist

DINAS DYCHMYGOL YW ABERTAWÉ...
TIRLUN O ERIALAU, PWYNTYDDION TAL A TENAU...
TROSGLWYDDYDDION A DERBYNYDDION

'Analluog o bensaerniaeth hudol, gwnawn gelf o'n prinder'

- Patrick Keiller,
The View from the Train – Cities and Other Landscapes, 2013

Dinas dychmygol yw Abertawe... tirlun o erialau, pwyntyddion tal a tenau...
trosglwyddion a derbynyddion. Rwy'n taflunio fy hun ar y toion, tafluniad
serol... Yr Athro a'r Margherita – teithiau nosol gwrach. Y trepodiau...rhwng
malais, gweld oll – eu taldra – pŵer. Neu erialau tô Sun Alliance, wedi eu siapio
fel blociau Duplo llwyd. Beth sy'n trosglwyddo a derbyn...



Huw Griffiths, Architect

NOW THE GREATEST OBSTACLE WITHIN THE CITY CENTRE, THE KINGSWAY ALSO HAS THE OPPORTUNITY OF REVERSING ITS CURRENT ROLE AS A CONSTRAINT TO A MORE CONNECTIVE, CIVIC, GREEN AND USEFUL SPACE.

'Only places which are accessible to people can offer them choice. The quality of permeability - the number of alternative ways through an environment is therefore central to making responsive places.'

- Responsive Environments: Bentley et al

Civic provides us with an opportunity to work to on an open-ended and collaborative method, working with the other artists and architects in preparation for the show and the nature of exchange and dialogue is exciting and often an environment that many architects only experience in University. This is wrong, all creative industries need constant interphase and cross over in the form of collaboration and dialogue in order to maintain an ability to respond and make better surroundings.

Cities are an organic organisms in urban guises, constantly changing. To reconnect ourselves with Swansea City Centre is an opportunity which allows planners, architects, urban designers, artists and creative thinkers to work collaboratively to challenge and engender new ideas. This is an attempt to revitalise reinvigorate and personalise our visits and experiences of our city centre, to re evaluate our needs.

We will be focusing on The Kingsway, an iconic main thoroughfare, which has undergone many changes and systems of negotiation since its post war development in 1947. Now the greatest obstacle within the City Centre, The Kingsway also has the opportunity of reversing its current role as a constraint to a more connective, civic, green and useful space. We propose to engage visitors to the exhibition in a conversation about reversing its future from being an obstacle to a more people friendly more humane space where pedestrians can enjoy their environment within a safer and greener context. The inclusion of smaller more intimate city centre spaces to other larger spans may offer the opportunities we are all seeking to experience in our cities.

Huw Griffiths, Pensaer

NAWR EIN RHWYSTR MWYAF YNGHANOL Y DDINAS, MAE GAN Y FFORDD BRENHINOL GYFLE I WRTH-DROI EI RÔL PRESENNOL FEL CYFYNGIAD I LE MWY CYSYLLTOL, DINESIG, GWYRDD A DEFNYDDIOL.

'Dim ond llefydd sydd yn hygyrch i bobl sydd yn gallu cynnig dewis. Ansawdd a threiddedd – y nifer o ffyrdd gwahanol trwy amgylchedd sydd yn allweddol i greu llefydd ymatebol.'

- Responsive Environments: Bentley et al

Mae Civic yn darparu ni gyda chyfle i weithio mewn modd agoriadol a chydweithredol, yn gweithio gydag artistiaid a phenseiri eraill mewn paratoad i'r sioe ac mae'r natur o gyfnewid a deialog yn gyffrous ac yn aml yn awyrgylch mae penseiri ond yn profi mewn Prifysgol. Mae hyn yn anghywir, gan fod angen rhyngffas parhaol a chroesiad mewn ffurf cydweithrediad a deialog ar bob diwylliant creadigol i gynnal ac i wneud amgylcheddau gwell.

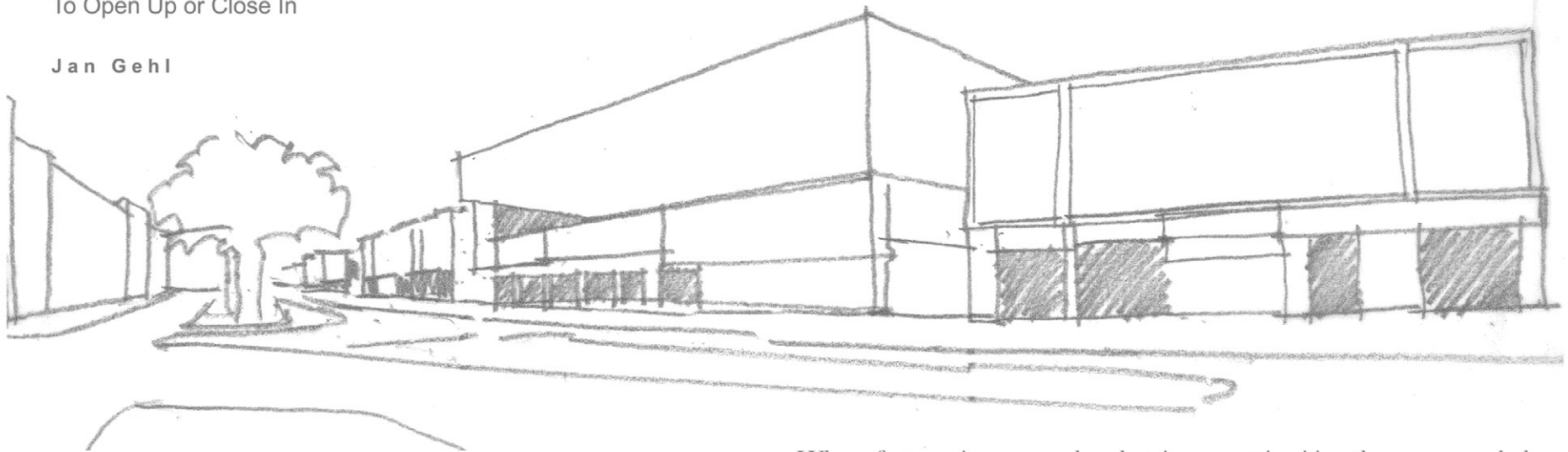
Organebau organig yw dinasoedd mewn rhith dinesig, yn newid yn barhaol. Cyfle i ailgysylltu gyda chanol dinas Abertawe sydd yn gadael i gynllunwyr, penseiri, dylunwyr dinesig, artistiaid ac athronwyr creadigol i weithio'n gydweithredol ac i herio a pheri syniadau newydd. Ymgais ydyw i ailfywhau, aillywiogi a phersonoli'n teithiau a profiadau yn ein dinas, i ail-werthuso ein hanghenion.

Byddwn yn ffocysu ar y Ffordd Brenhinol, prif dramwyfa eiconig, sydd wedi profi nifer o newidiadau a systemau trafodaeth ers ei ddatblygiad wedi'r rhyfel yn 1947. Nawr ein rhwystr mwyaf ynghanol y ddinas, mae gan y Ffordd Brenhinol gyfle i wrth-droi ei rôl presennol fel cyfyngiad i le mwy cysylltol, dinesig, gwyrdd a defnyddiol. Rydym yn cynnig cysylltu ymwelwyr i'r arddangosfa mewn sgysiau am wrthdroi ei ddyfodol o fod yn rhwystr i le mwy caredig i bobl lle gall cerddwyr fwynhau eu hawyrgylch mewn cyd-destun diogel a gwyrdd. Efallai bydd ychwanegu llefydd llai a mwy agos canol y ddinas gyda rhai mwy yn cynnig cyfleoedd rydym ni oll am brofi yn ein dinasoedd.



To Assemble or Disperse
To Integrate or Segregate
To Invite or Repel
To Open Up or Close In

Jan Gehl



Where fast moving cars and pedestrians meet in cities, the cars overwhelm the pedestrians. The car is king and people are made to feel small.

A Pattern Language Towns Buildings Construction (Oxford University Press)

Jason & Becky, Collaborative Artists

OUR YEARNING FOR NOSTALGIA AND ITS ACCOMPANYING
EXCITEMENT OF CHILDHOOD ARE MISPLACED IN THE
CONSTRUCTION OF THE NEW.

A Cowboy in Tomorrowland

The spell of the city diminishes with every moment past the excitement and wonder of youthful exploration. Grey and dour and broken and limping through a supposedly wondrous explosion of postmodern falsification. Wet and cold and poor, struggling cosmetic enhancements hang on to their structures by threads. This is a coastal city, where the power and menace of the sea have the last word on architectural inconsequence. Rust runs and stains, panels fall and glass is misted in reflection of the bright grey sky.

Our yearning for nostalgia and its accompanying excitement of childhood are misplaced in the construction of the new. Nostalgia by its nature recalls the unattainable romance in the physical world we call a city. The spell cast on our open and creative young minds is lost over time to the mind numbing tedium of inconsequential perambulation.

By entering the gates of a theme park even the most unlikely and unwilling participants enter a contract with themselves to be open to the possibilities of imagination. The possibility of elsewhere. Elsewhere can take many forms, especially when including the elsewheres of the human imagination - triggered by, manifested as, or independent from physically tangible spaces and their representations.

For Civic 2014, Jason & Becky explore the power of elsewheres within our cities. Enabling individually dynamic landscapes of motion, with out-of-the-ordinary movement as an integral and essential phenomenon.

Working with sound, story, and a fabricated or pre-existing visual landscape, they re-invent our everyday architecture to form the living background to a personal adventure.

There's a Cowboy in Tomorrowland.

Jason & Becky, Artistiaid Cydweithredol

DYHEUAETH AM HIRAETH A'I GYFFRO CYFEILIOL O
BLENTYNDOD WEDI EI GAMOSOD WRTH
ADEILADU'R NEWYDD.

Cowboi yng Ngwlad Yfory

Swyn y ddinas yn prinhaus gyda pob munud heibio'r cyffro a rhyfeddod archwiliad ieuanc. Llwyd a cyndyn a toredig trwy ffrwydrad rhyfeddol anwiriad postmodern. Gwlyb ac oer a thlawd, codiad cosmetig yn brwydro i ddal ar eu strwythurau. Dinas arfordirol yw hwn, lle mae pŵer a bygythiad y môr yn cael y gair olaf ar ddiweithdra pensaernïol. Llifa a staenia rhwd, paneli yn cwmpo a gwyr yn niwlio yn adlewyrchiad awyr llachar llwyd.

Dyheuaeth am hiraeth a'i gyffro cyfeiliol o blentyndod wedi ei gamosod wrth adeiladu'r newydd. Hiraeth wrth ei natur yn galw ar rhamant anghyraeddadwy ym myd ffisegol y ddinas. Collwn hud agored a chreadigol ein meddyliau ifanc dros amser i daith dibwys.

Wrth groesi trwy gatiâu'r parc adloniant mae hyd yn oed y rhai mwyaf annhebyg ac anfodlon yn gwneud cytundeb gyda'u hun i fod yn agored i bosibiliadau dychymyg. Y posibilrwydd o'r lle arall. Gall y lle arall hyn gymryd nifer o wahanol ffurfiau, yn enwedig pan yn cynnwys lle arall dychymyg dynol - wedi ei sbarduno gan, amlygu gan, neu'n annibynol wrth wagleoedd ffisegol gwirioneddol a'u portreadau.

I Civic 2014, archwilia Jason & Becky pŵer y lle arall o fewn ein dinas. Gan alluogi tirluniau symudiad annibynol a deinamig, gyda symudiad allan o'r normal fel ffenomenon allweddol ac hanfodol.

Gan weithio gyda sain, stori, a tirlun gweledol adeiladol neu sydd wedi bodoli eisioes, maent yn ailddyfeisio pensaernïaeth bob dydd i ffurfio cefndir byw i antur bersonol.

Mae yna gowboi yng Ngwlad Yfory.



Niall Maxwell, Rural Office for Architecture

THE PRACTICE FOCUSES ON DEVELOPING A VERNACULAR DESIGN RESPONSE TO THE RURAL CONTEXT IN WHICH THEY LIVE AND WORK.

My interest in this project came from reading Calvino's Invisible Cities and thinking how it might be possible to represent a city through brief descriptions and representations.

As a dialogue between artist and architect, I thought it might be interesting to flip roles, the artist providing the written descriptions and the architect drawing from these. We agreed to communicate only via twitter and I further restricted myself by only being able to draw on an ipad app.

The clues were incredibly cryptic and I eventually tried a type of sketch shorthand; part diagram, part drawing. As a body of images they feel like a set of ideas for a project, as if opening someone's sketchbook.

There is something filmic in this process, as if creating a story board of scenes - the descriptions started to thread together, giving the impression that we were on a journey, moving from scene to scene.

Niall Maxwell, Swyddfa Wledig am Bensaerniaeth

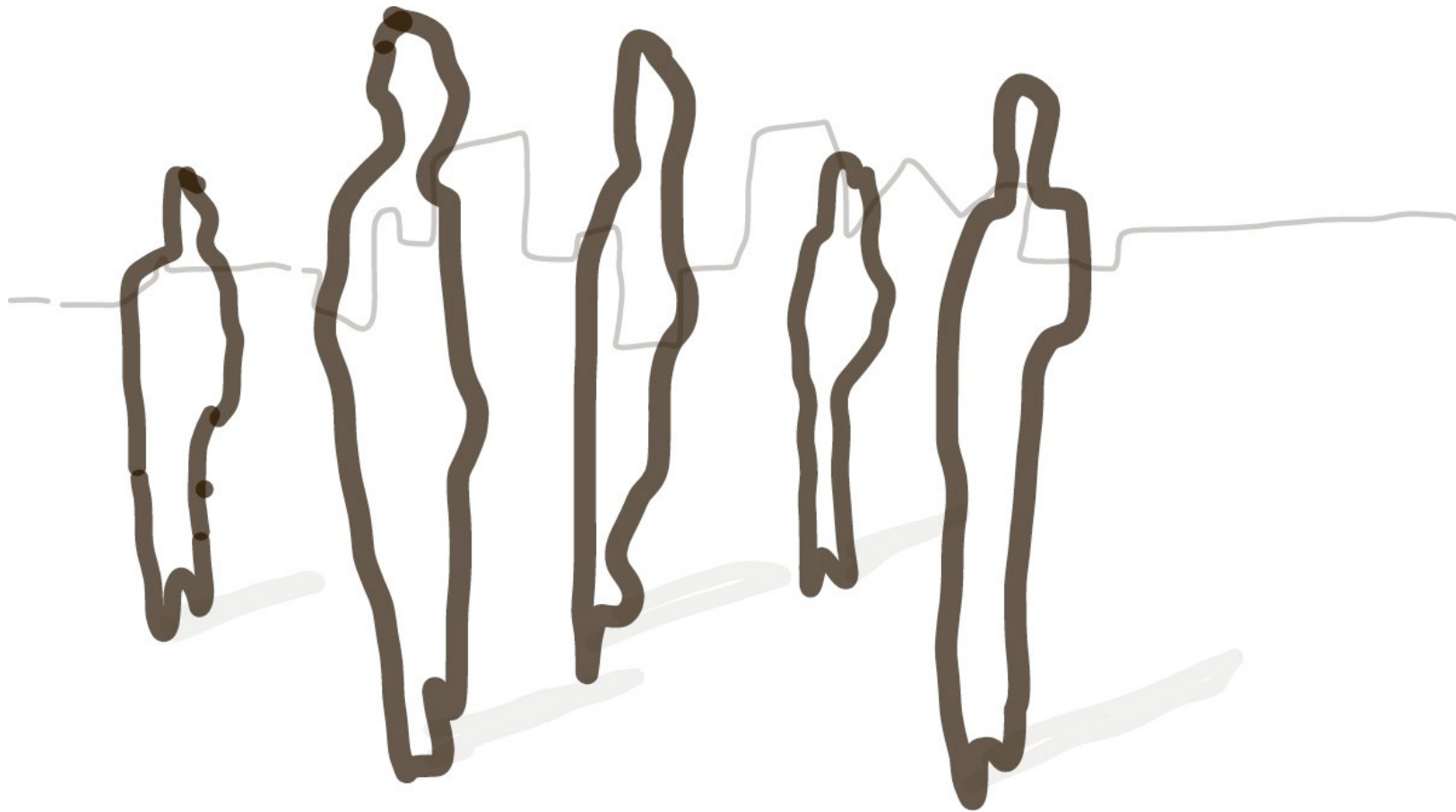
MAE'R YMARFER YN FFOCYSU AR DDATBLYGIAD YMATEDB DYLUNIAD BRODOROL I GYD-DESTUN GWLEDIG LLE MAENT YN BYW A GWEITHIO.

Daeth tarddiad fy niddordeb yn y prosiect o ddarllen Invisible Cities Calvino a meddwl sut fyddai'n bosib cynrychioli dinas trwy ddisgrifiadau byr a phortreadau.

Fel deialog rhwng artist a phensaer, meddyliais bydd yn ddiddorol newid y roliau, gan ddarparu'r artist gyda disgrifiadau ysgrifenedig a'r pensaer gyda darluniau o'r rhain. Cytunon ond i gyfarthrebu trwy twitter ac fe gyfyngais fy hun hyd yn oed mwy trwy ond arlunio ar app ipad.

Roedd y cliwiau yn gyfrin iawn ac yn raddol ceisiais ar fath o fraslunio llaw-fer; rhan diagram, rhan arlunio. Fel grŵp o ddelweddau maent yn teimlo fel set o syniadau ar gyfer prosiect, fel petawn yn agor llyfr braslunio rhywun.

Mae yna rywbeth ffilmig yn y broses yma, fel creu bwrdd stori golygfeydd – dechreuodd y disgrifiadau glymu gyda'i gilydd, gan roi'r ddelwedd ein bod ar daith, yn symud o olygfa i olygfa.



Catriona Ryan, Academic & Poet

SWANSEA PEEPS WILL FOCUS ON THE SIGNIFICANCE OF WINDOWS AS PHYSICAL & METAPHYSICAL REPRESENTATIONS AND REFLECTIONS OF HUMAN IDENTITY & EXPERIENCE

Swansea Peeps

The Swansea Peeps exhibition will focus on the significance of windows as physical and metaphysical representations and reflections of human identity and experience. The process of exploring these ideas will be through a number of perspectives including poetry workshops.

These workshops will provide the basis to explore ones relationship with various reflective representations mediated through the physical and metaphorical significance of windows. The examination will also incorporate themes relating to identifying a sense of place in Swansea through its physical landscape.

There will also be an opportunity to take those verbal and written poetic reflections further in terms of transforming those ideas into visual forms of expression such as creating video poems, drawing and sculpting.

Catriona Ryan, Academydd a Bardd

BYDD SWANSEA PEEPS YN FFOCYSU AR ARWYDDOCAD FFENESTRI FEL PORTREADAU FFISEGOL A METAFFISEGOL AC ADLEWYRCHIADAU HUNANIAETH A PROFIAD DYNOL

Swansea Peeps

Bydd arddangosfa Swansea Peeps yn ffocysu ar arwyddocad ffenestri fel portreadau ffisegol a metaffisegol ac adlewyrchiadau hunaniaeth a profiad dynol. Archwilir y syniadau yma trwy nifer o safbwyntiau gan gynnwys gweithdai barddoni.

Bydd y gweithdai yma yn darparu Sylfaen i archwilio perthynas un gydag amrywiaeth o gynrychioliaethau adlewyrchol wedi eu cyfryngu trwy arwyddocad ffisegol a metaffisegol ffenestri. Bydd yr archwiliad hefyd yn cynnwys themau perthnasol i adnabod naws o le yn Abertawe trwy ei dirlun ffisegol.

Bydd hefyd gyfle i gymryd yr adlewyrchiadau geiriol ac ysgrifenedig yn bellach wrth trawssffurfio'r syniadau hyn i ffurfiau gweledol o fynegiant fel creu cerddi fideo, arlunio a cherffunio.

Light, light destroyed, pathways cold
in shards and splinters.

Silvering break, snow flashes and
solid clarity.

Lifetime silvering mirrors reflecting
keeping warm.

A beautifully painted shutter with
orangey tungsten edges, keeping warm,
past cold, brittle whiteshine.

-Deirdre

Under-stand the Inner-view,
I stand under Dylan's view

In the window peace

Beyond the veil.

Window watching

People pursuit.

They occupy my mind

And I am with them.

- Lindsay

Lindsay Halton, Architect - Author - Guide

GUIDING PEOPLE TO JOURNEY INSIDE THE PSYCHOLOGY
OF THEIR HOMES; TO EXPLORE WHAT THEY REALLY
WANT IN LIFE.

CIVIC 2014 – Swansea Peeps

I want to get inside the city. The city is not just what we see in all its ugliness and loveliness; it is the place of the people – the citizens – the ‘peeps’.

There may be longing, there may be loss and there may be desire - A window can hold all these views. Our windows frame our experience of the way things are, and they can influence the way we want things to be - I can show people how to look at their windows in a new way.

So my question is: What do you see when you look out your window, and how does this reflect upon your own life story?

At the gallery I will talk with as many people as possible in my five day window of time, and in exchange for their views, I will share mine.

Visiting the homes of several people will open windows to their life stories, and looking at their windows may offer some life changing views.

A joint workshop with Catriona Ryan will bring extra depth and dimension, and by way of a video diary; my record will be a ‘virtual window’ – a peep at the peeps, and a view from inside the city.

Lindsay Halton, Pensaer - Awdur – Arweinydd

TYWYS POBL I DEITHIO I SEICOLEG Y CARTREF;
I ARCHWILIO BETH MAENT AM
GAEL YM MYWYD.

CIVIC 2014 – Swansea Peeps

Rwyf am fynd i mewn i'r ddinas. Nid yw'r ddinas yn rhywbeth rydym yn ei weld yn ei hagrwrch a'i hyfrydwch; mae'n le o bobl – y trigolion – y ‘peeps’.

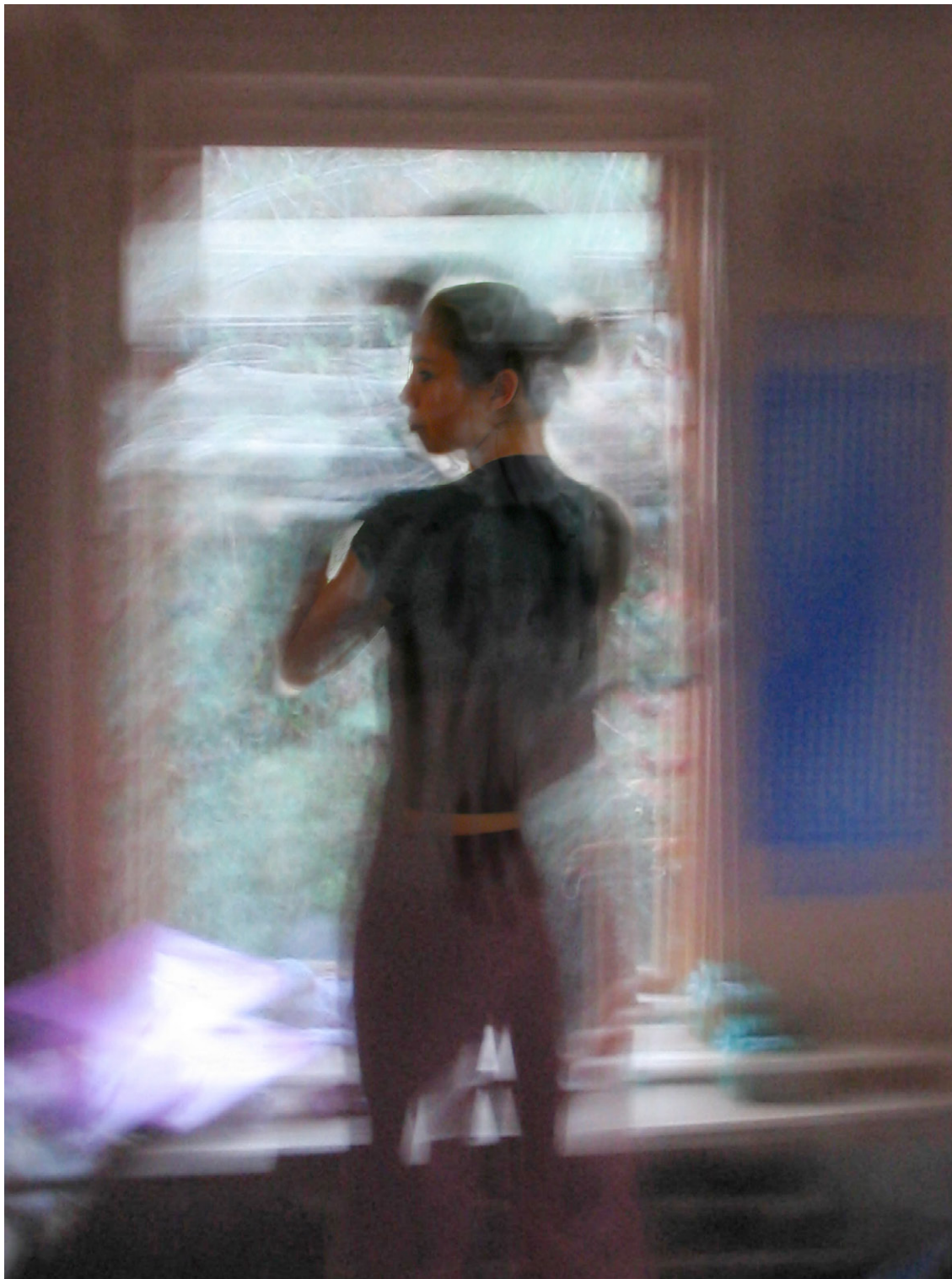
Efallai bydd yna hiraeth, efallai bydd colled neu angerdd – gall ffenest ddal yr holl olygfeydd yma. Mae'r ffenest yn fframwaith profiad bywyd, gallent ddylanwadu'r ffordd rydym am i bethau fod – dangosaf i eraill sut i edrych ar eu ffenestri mewn ffyrdd newydd.

Felly fy nghwestiwn yw: Beth welwch chi allan o'ch ffenest, a sut adlewyrchir hyn ar stori eich bywyd?

Yn yr oriel byddaf yn siarad â chymaint o bobl a phosib yn ystod y pum diwrnod, ac am eu barn, byddaf yn rhannu fy marn i.

Bydd ymweld â chartrefi saith o bobl yn agor ffenest ar storïau eu bywyd, ac efallai bydd edrych ar eu ffenestri yn cynnig barn newid bywyd.

Bydd gweithdy ar y cyd gyda Catriona Ryan yn dod a dyfnder a deimensiwn arall, a thrwy dyddiadur fideo; bydd fy ngofnod yn ‘ffenest rhinweddol’ – peep ar y peeps, a golwg o mewn tu fewn y ddinas.



Bella Kerr

Bella Kerr's practice has spanned installation, small-scale multiples, film, set design and digital prints. Recent work includes Keeper(s), an ongoing collaborative, participatory work initiated as an exhibition at Mission Gallery, now continuing as an online project. She is currently Programme Director of the Foundation Art & Design course at UWTSO, Swansea.

Owen Griffiths

Owen Griffiths is an artist based in Swansea and Copenhagen. His practice is socially engaged and collaborative; connected to architecture, food and food production, the garden, the market, and structures of cultural exchange, which explore the challenges and negotiations of normativity, space and resources in cities and environments. Griffiths is a student at the school of Walls and Space and National Advisor to the Arts Council of Wales on Architecture and Urban Regeneration.

For Civic I am working with a number of other co-authors in responses to the ideas and themes of the exhibition. Swansea continues to inspire and excite creative possibilities for me, it has been a key material in some of my work- its off centered-ness and its possibilities always seem under realized, which is why so many people return to it – it's a work in progress as are most cities.

Andrew Nixon & Steven Hooper (Powell Dobson)

Andrew is a Partner in Powell Dobson Architects and runs the Swansea Office. He is a qualified Architect and lives with his family in the Uplands and can be seen most days commuting along the seafront on his bike to the office at the J Shed in SA1. Andrew and the practice have worked on a number of projects in the City including The LC, Bus Station, redevelopment of the former Central Library and the Glynn Vivian Art Gallery, for which work on site is now underway. He strongly believes in working directly at a local level and is grateful for the opportunities that the practice have enjoyed, working on some of the City's most important projects.

Steven lives and works in Swansea. His role at Powell Dobson is to assist at all stages of the project from the initial design concepts for projects through to planning submission packages and technical design. He is a qualified model maker and regularly makes use of these skills to produce presentation models and maquettes. Steven sets up and manages project Building Information Modelling requirements and is an accomplished 3D visualiser and illustrator. Steven's interest in green roofs stem from experience in projects that encompass innovative technologies at the forefront of sustainable design.

Bella Kerr

Mae gwaith Bella Kerr wedi cymryd ffurf gwaith sefydlog, lluosog graddfa bach, ffilm, dylunio set a printio digidol. Mae gwaith diweddar yn cynnwys Keeper(s), gwaith parhaol cyfunol wedi ei ymgorffori fel arddangosfa yn Oriel Mission, nawr yn parhau fel prosiect arlein. Cyfarwyddwr Rhaglen Cwrs Sylfaen Celf a Dylunio yn UWTSO, Abertawe.

Owen Griffiths

Artist wedi ei selio yn Abertawe a Copenhagen yw Owen Griffiths. Mae ei ymarfer â chyswllt cymdeithasol a chydweithredol; yn gysylltiedig i besaerniaeth, bwyd a chynhyrchiad bwyd, yr ardd, y farchnad, a strwythurau cyfnewid diwyllianol, i archwilio heriau a thrafodaethau normadol, gwagle ac adnoddau mewn dinasoedd ac amgylcheddau. Myfyriwr Ysgol Waliau a Gwagleoedd ac Ymgynghorydd Cenedlaethol Cyngor Gelfyddydau Cymru ar Bensaerniaeth ac Adfywiad Trefol.

I Civic rwy'n gweithio gyda nifer o gyd-awduron i ymateb i syniadau a themau'r arddangosfa. Mae Abertawe yn parhau i ysbrydoli a chyffroi posibilidadau creadigol, ac wedi bod yn ddeunydd allweddol yn aml yn fy ngwaith – mae ei bosibiliadau oddi ar y canol heb ei sylweddoli'n llawn, dyna pam mae cymaint o bobl yn dychwelyd – mae'n waith datblygol fel y rhan fwyaf o ddinasoedd.

Andrew Nixon & Steven Hooper (Powell Dobson)

Partner yn Mhenseiri Powell Dobson yw Andrew a fe sydd yn rhedeg Swyddfa Abertawe. Pensaer cymwysedig ydyw ac mae'n byw gyda'i deulu yn yr Uplands a gellid ei weld bron yn ddyddiol yn teithio ar hyd y bae ar ei feic i'r swyddfa yn y J Shed yn SA1. Mae Andrew a'i ymarfer wedi gweithio ar nifer o brosiectau yn y ddinas gan gynnwys y LC, Gorsaf Fysiau, ailddatblygiad yr hen Lyfrgell Ganolig ac Oriel Gelf Glynn Vivian, lle mae gwaith ar y maes ar ei ffordd. Creda'n gryf mewn gweithio'n uniongyrchol ar lefel lleol ac mae'n ddiolchgar am y cyfleoedd mae'r ymarfer wedi ai brofi, gan weithio ar rhai o brosiectau mwyaf pwysig y Ddinas.

Mae Steven yn byw a gweithio yn Abertawe. Ei rôl yn Powell Dobson yw cynorthwyo ar bob lefel prosiect o ddyluniad dechreuol prosiect hyd at gynllunio pecynnau argymhelliad a dylunio technegol. Gwneuthurwr model cymwysedig ydyw ac mae'n defnyddio'r sgiliau hyn wrth gynhyrchu modelau a maquettes cyflwyniol. Mae Steven yn trefnu a rheoli gofyniadau Modeli Gwybodaeth Adeiladol ac mae'n ddarluniwr 3D ac arluniwr medrus. Daw diddordeb Steven mewn toion gwyrdd o brofiad mewn prosiectau sydd yn amgylchynu technolegau dyfeisiol ar flaen dylunio cynhaliol.

Anna Barratt

I am interested in connecting the everyday with daydreaming through the practice of drawing and made objects. In the last eighteen months I have distributed drawings through experimentation with the “zine” format and self-publishing.

I have exhibited in Wales and London and was an artist in residence at the Glyn Vivian Art Gallery in 2013.

Huw Griffiths

Huw Griffiths is an Architect who has been based in Swansea for over 25 years. His practice has a mixed portfolio of commissions from housing, collaborations with charitable institutions and educational work. Whether working with large clients on an international level or working with a family to adapt or build a home, the practices' ethos is about creating spaces, which respond to the vernacular and work in collaboration with the clients and their needs.

The team at HGA is comprised of architects technicians as well as students and architectural graduates which enrich the work and provide a sense of constant development and discussion. A sense of community and education is at the heart of HGA, learning new technologies in sustainability and developing new skills such as conservation and urban design, in order to adapt to new territories, new needs and shifting landscapes.

Jason & Becky

Investigating the socio-economic and socio-political condition, Jason & Becky's work collaboratively to addresses questions regarding our current human and social state. They challenge perceptions and encourage engagement by blurring boundaries and pushing limits through interaction. Viewers and participants are often challenged to rethink their relationships to one another and their surroundings, confronting altered situations and simulated environments designed to create the uncertainty of internal dispute.

Anna Barratt

Mae gen i ddi-ddordeb yn cysylltu'r bob dydd gyda breuddwydio trwy ymarfer arlunio a chreu gwrthrychau. Yn y deunaw mis diwethaf rwyf wedi dosbarthu darluniau trwy arbrofion gyda ffurf “zine” hunan gyhoeddi.

Rwyf wedi arddangos yng Nghymru a Llundain ac artist preswyl oeddwn yn Oriel Gelf Glyn Vivian yn 2013.

Huw Griffiths

Pensaer wedi ei selio yn Abertawe am dros 25 mlynedd yw Huw Griffiths. Mae ei ymarfer â portffolio cymysg o gomisiynau gan gynnwys tî, cydweithio gyda sefydliadau elusenol a gwaith addysgiadol. Wrth weithio gyda chleientiaid mawr ar lefel rhyngwladol neu weithio gyda teulu i addasu neu adeiladu cartref, ethos yr ymarfer yw creu lle, sydd yn ymateb i'r brodorol a gweithio mewn cydweithrediad gyda'r cleientiaid a'u anghenion.

Mae'r tîm ym Mhensaer HG yn cynnwys penseiri, technolegwyr ynghyd a myfyrwr a graddedigion pensaernïol sydd yn cyfoethogi'r gwaith a darparu naws o ddatblygiad a trafodaeth parhaol. Mae syniad o gymdeithas ac addysg yng nghalon Pensaer HG, gan ddysgu technolegau newydd yng nghynnaladwyedd a datblygu sgiliau newydd fel dylunio dinesig a chadwraeth, i addasu tiriogaethau newydd, anghenion newydd a tirluniau newidol.

Jason & Becky

Gan archwilio'r ansawdd economig cymdeithasol a gwleidyddiaeth cymdeithasol, mae Jason & Becky yn gweithio'n gyfunol i gwestiynu ein stâd dynol a chymdeithasol. Maent yn herio canfyddiadau ac annog cyswllt trwy bylu a gwrthio'r ffiniau trwy ryngweithiad. Caiff gwylwyr a chyfranwyr eu herio i ailfeddwl eu perthnasau gyda'i gilydd a'u hamgylcheddau, gan wrthdaro sefyllfaoedd newidiol ac amgylcheddau ffug i greu ansicrwydd mewnol.

Niall Maxwell

Niall moved to Wales from London in 2004 to work on the development of Cardigan's historic port on the Teifi river estuary. Niall's career started at John Pawson's office in London, before joining the site team for BALTIC, Centre of Contemporary Art in Gateshead. He also built his own house in East London whilst teaching at The Bartlett School of Architecture, University College London.

Niall is principal of Rural Office for Architecture, an award winning RIBA Chartered architectural practice based near Newcastle Emlyn, West Wales. The practice focuses on developing a vernacular design response to the rural context in which they live and work. In recent years the rural location of projects has spread to England, but they continue to respond contextually to each site.

They choose to live and work in rural Wales, but this does not stop the practice from working across the UK. They have recently set up a London office.

Catriona Ryan

Dr Catriona Ryan is a poet, theorist and academic author. In 2012 she published a book on the theatre of Tom MacIntyre which was described by Professor Willy Maley as a 'pioneering work of criticism.' She is currently a Senior Research Fellow at University of Wales, Trinity St. David, Swansea.

Lindsay Halton

I wrote the book 'The Secret of Home', and my main work is homesouls® - Guiding people to journey inside the psychology of their homes; to explore what they really want in life.

homesouls® is a process that developed through two decades of my work as Architect, Author and Guide.

Niall Maxwell

Symudodd Niall i Gymru o Llundain yn 2004 i weithio ar ddatblygiad porth hanesyddol Aberteifi. Dechreuodd gyrfa Niall yn swyddfa John Pawson yn Llundain, cyn ymunodd â tîm maes BALTIC, Canolfan Gelf Gyfoes yn Gateshead. Adeiladodd ty ei hun yn Nwyrain Llundain tra'n dysgu yn Ysgol Bensaerniaeth Bartlett, Coleg Prifysgol Llundain.

Pennaeth Swyddfa Wledig am Bensaerniaeth, ymarferiad gwobrwyol RIBA Siartredig wedi ei selio yng Nghastell Newydd Emlyn, Gorllewin Cymru. Ffocysa'r ymarfer ar ddatblygu ymateb dyluniad brodorol i gyd-destun gwledig lle maent yn byw a gweithio. Yn ddiweddar mae lleoliad gwledig y prosiectau wedi ymestyn i Lloegr, ond maent yn parhau i ymateb yn gyd-destunol i bob maes.

Dewis byw a gweithio yng Nghymru Wledig gwnaethant, ond nid yw hyn yn atal yr ymarfer weithio ar hyd y DU. Agorwyd swyddfa yn Llundain yn ddiweddar.

Catriona Ryan

Bardd, damcaniaethwr ac awdur academig yw Dr Catriona Ryan. Cyhoeddodd llyfr yn 2012 ar theatr Tom MacIntyre a gafodd ei ddisgrifio gan yr Athro Willey Maley fel 'gwaith arloesol o feirniadaeth'. Cymrawd Ymchwil ym Mhrifysgol Y Drindod Cymru Dewi Sant, Abertawe.

Lindsay Halton

Ysgrifennai y llyfr 'The Secret of Home', a fy mhrif waith yw homesouls® - Arwain pobl ar daith drwy seicoleg eu cartrefi; I archwilio beth maent am gael allan o fywyd.

Proses yw homesouls® datblygodd drwy ugain mlynedd o fy ngwaith fel Pensaer, Awdur ac Arweinydd.

A Mission Gallery Exhibition, curated by Bella Kerr
Arddangosfa Oriel Mission, curadur gan Bella Kerr

MISSION GALLERY
GLOUCESTER PLACE
MARITIME QUARTER
SWANSEA
SA1 1TY

EXHIBITION: CIVIC
CURATOR: BELLA KERR
LOGO: JASON & BECKY
GRAPHICS: MATTHEW OTTEN
LOCATION: SWANSEA

