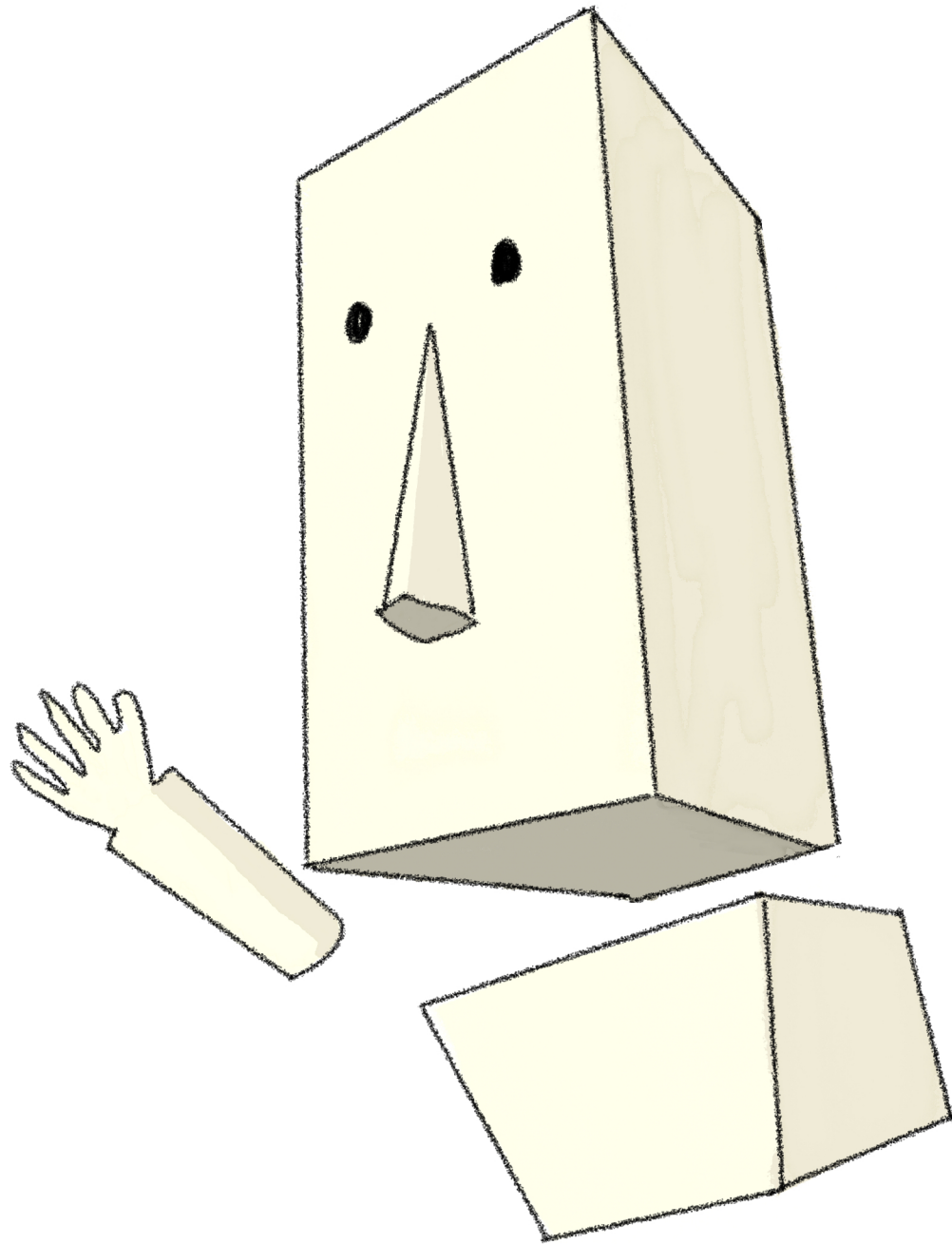
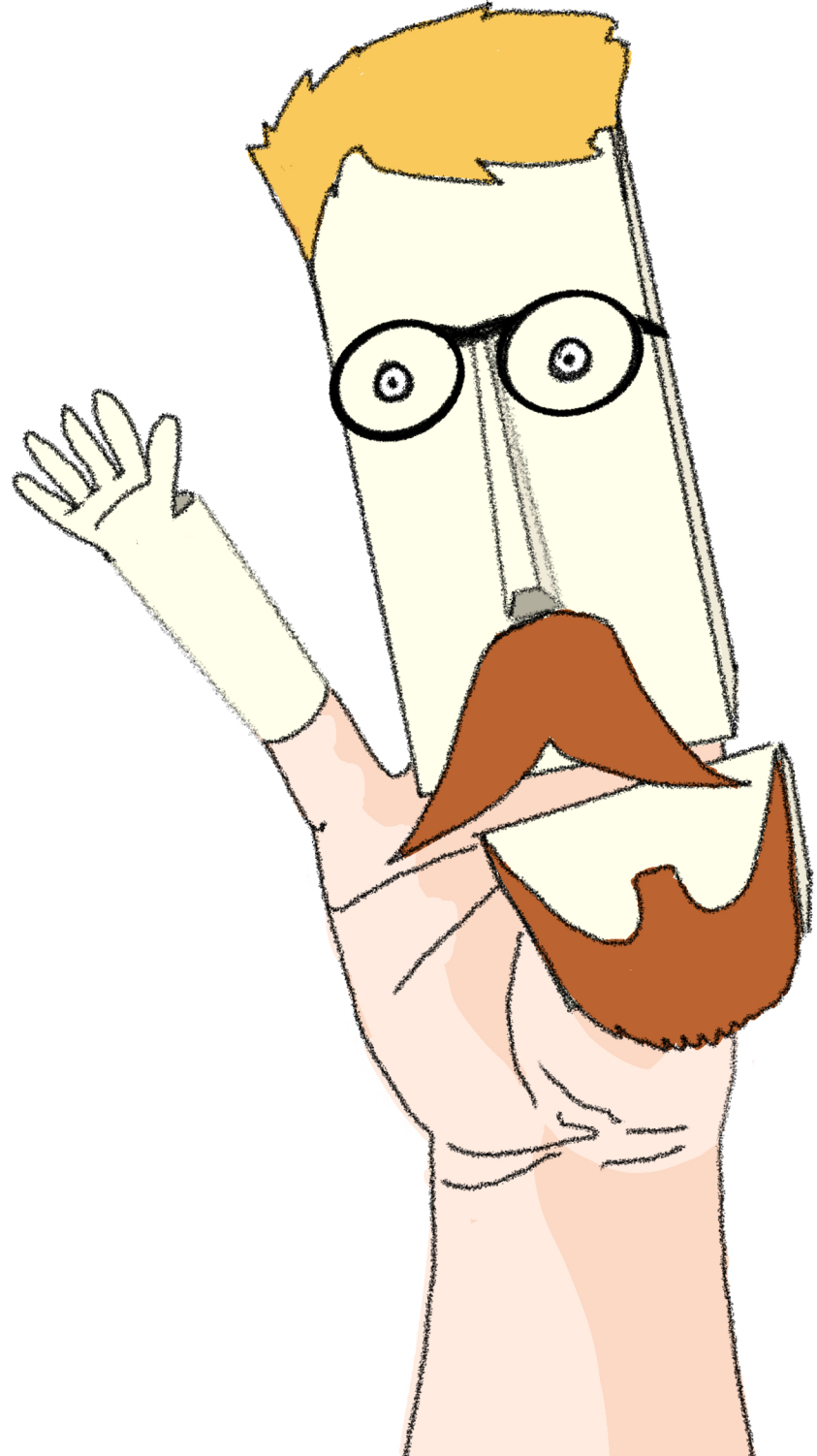
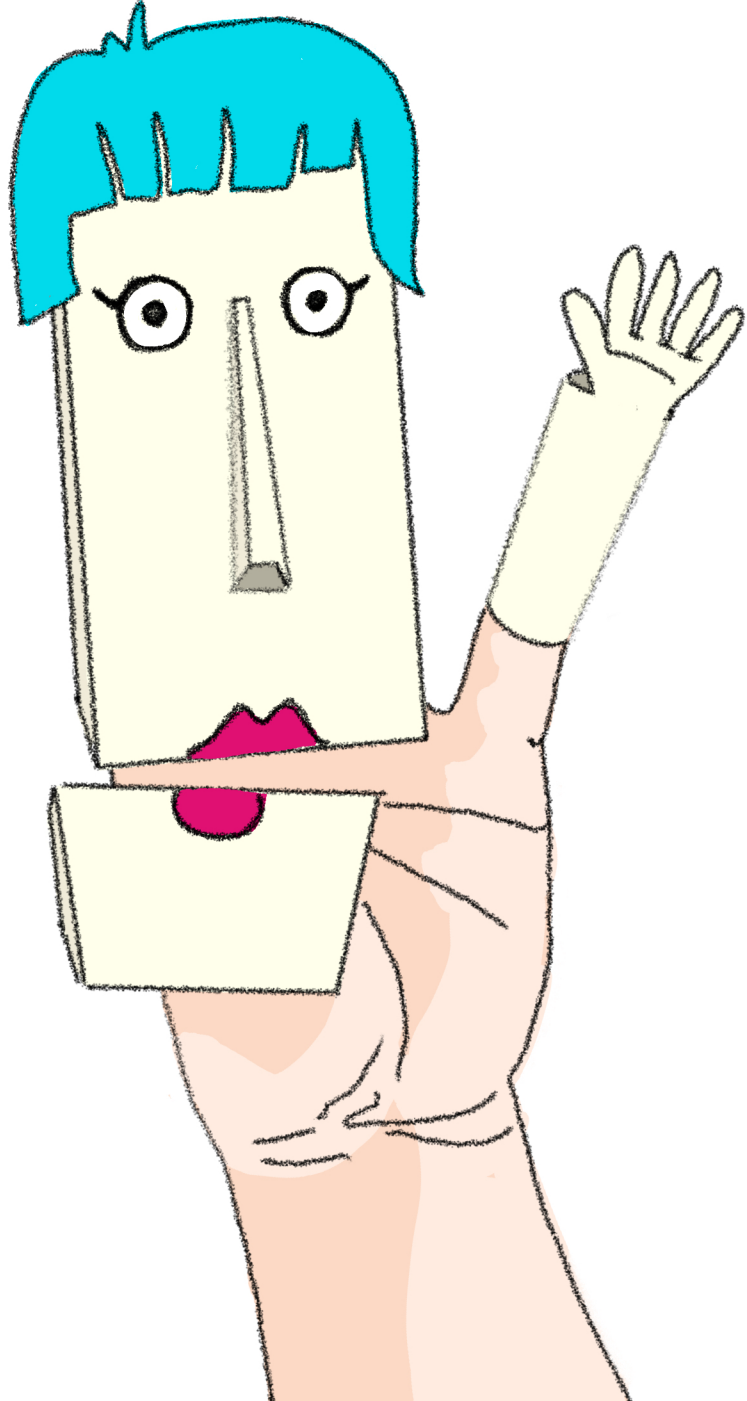


BOX HEAD PUPPET



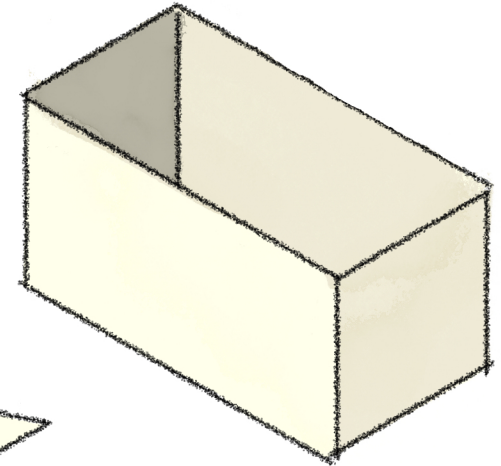
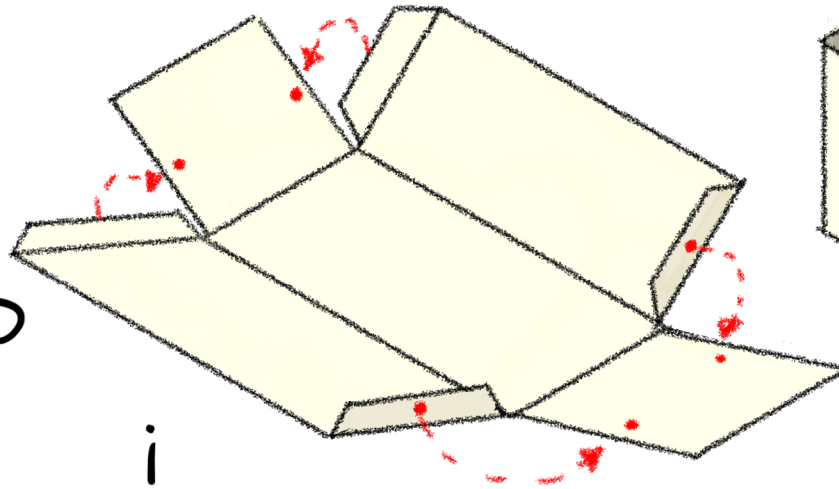


How to build your Box Head Puppet.

Things you'll need:-

- Scissors
- Glue or double-sided tape

HEAD

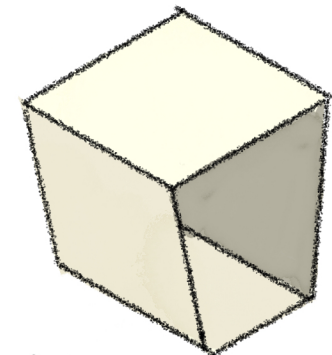
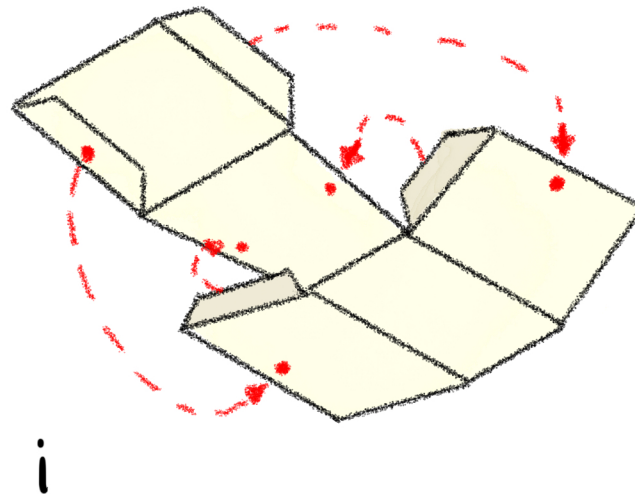


ii

step 1:-
cut out all parts
from the template
sheets (Head, chin,
nose, arm and
finger/thumb loops).

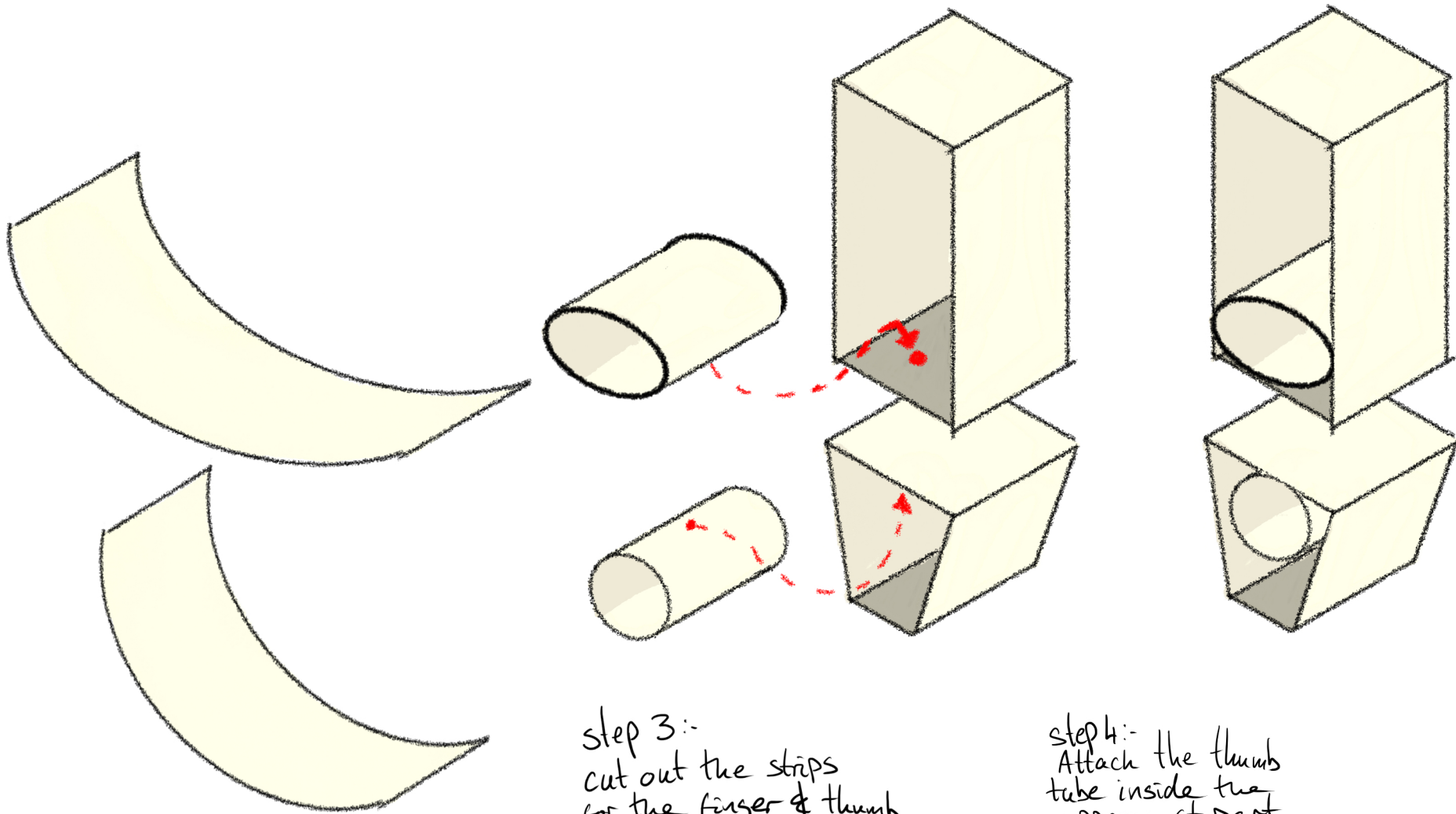
step 2:-
Make the head & chin.
Fold along the dotted
lines and glue the
tabs into place

CHIN



ii

How to build your Box Head Puppet.

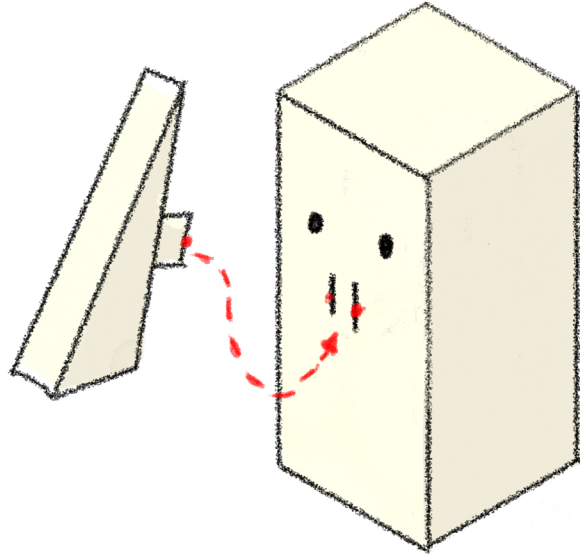


step 3:-
cut out the strips
for the finger & thumb
loops. Roll into tubes
(making sure they fit
securely onto your
thumbs and fingers)

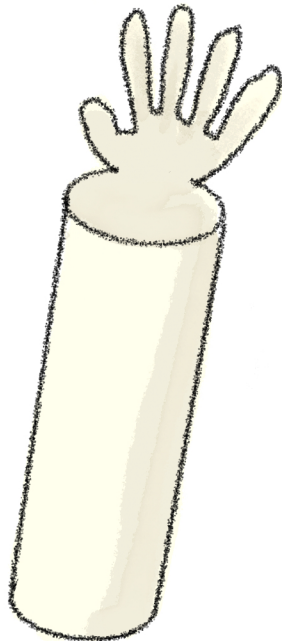
step 4:-
Attach the thumb
tube inside the
upper most part
of the chin.
Attach the finger
tube inside the
lower part of the head.

How to build your Box Head Puppet.

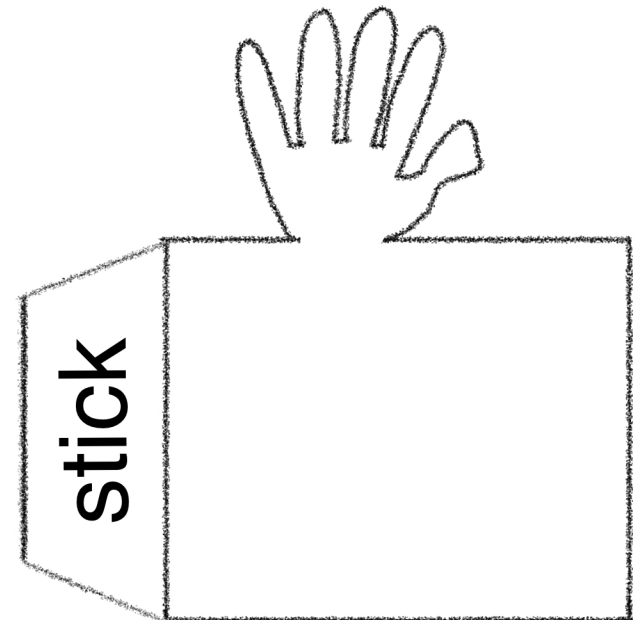
step 5:-
Cut out the nose
and fold along the
dotted lines.
Insert the tabs
in the slots on the
head.



step 6:-
cut out the
arm and roll
it around so
it will fit on
your little
finger

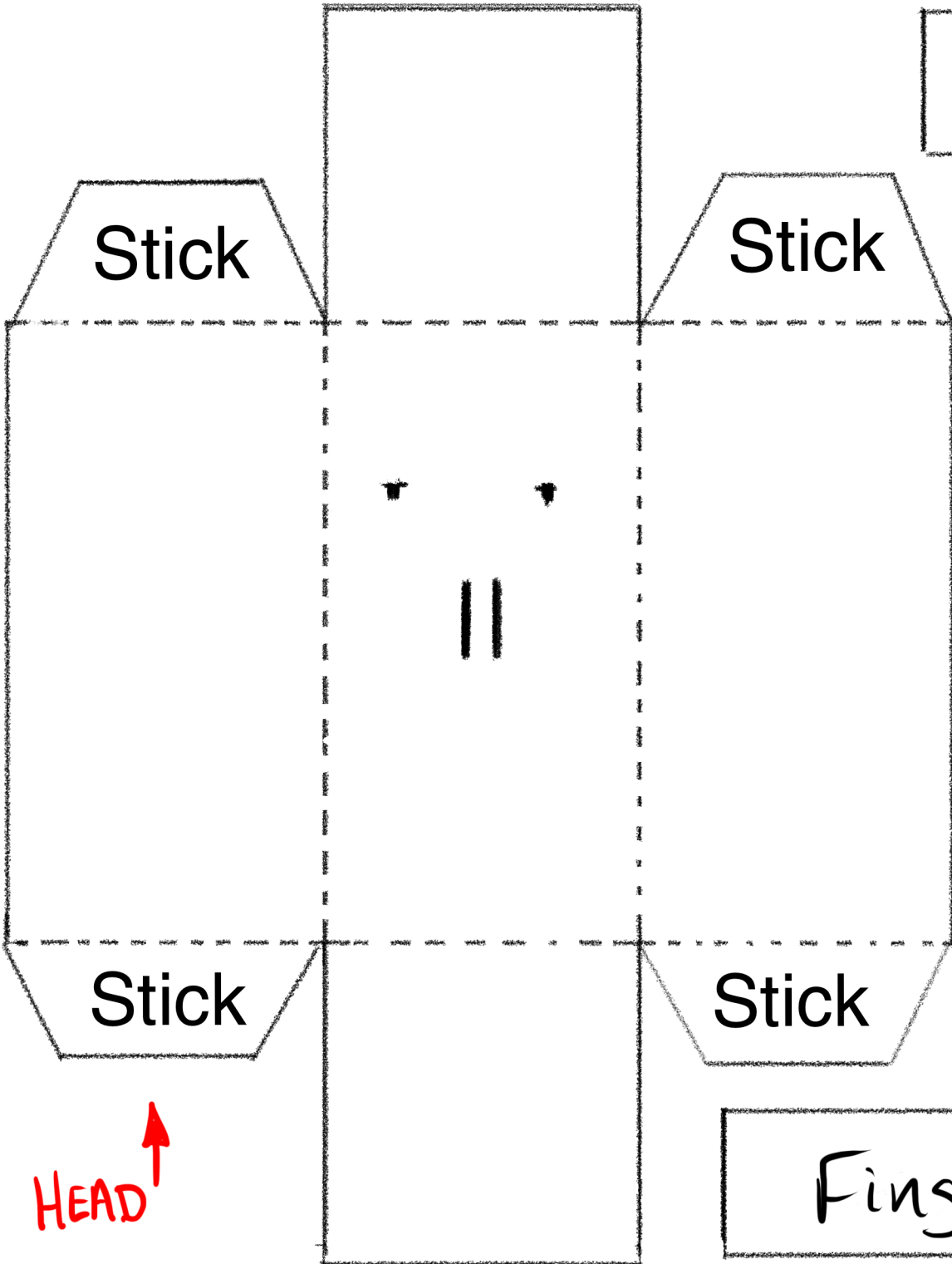


Nose

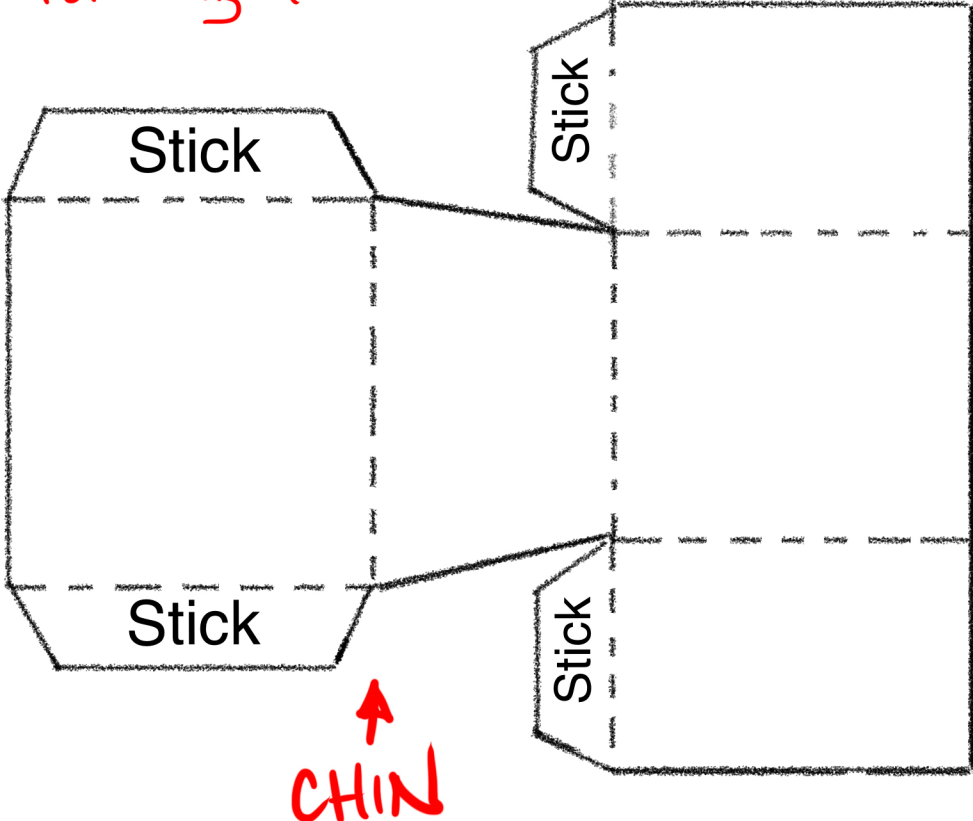


Arm

Thumb loop for the Chin



* cut along solid lines
Fold along dotted lines



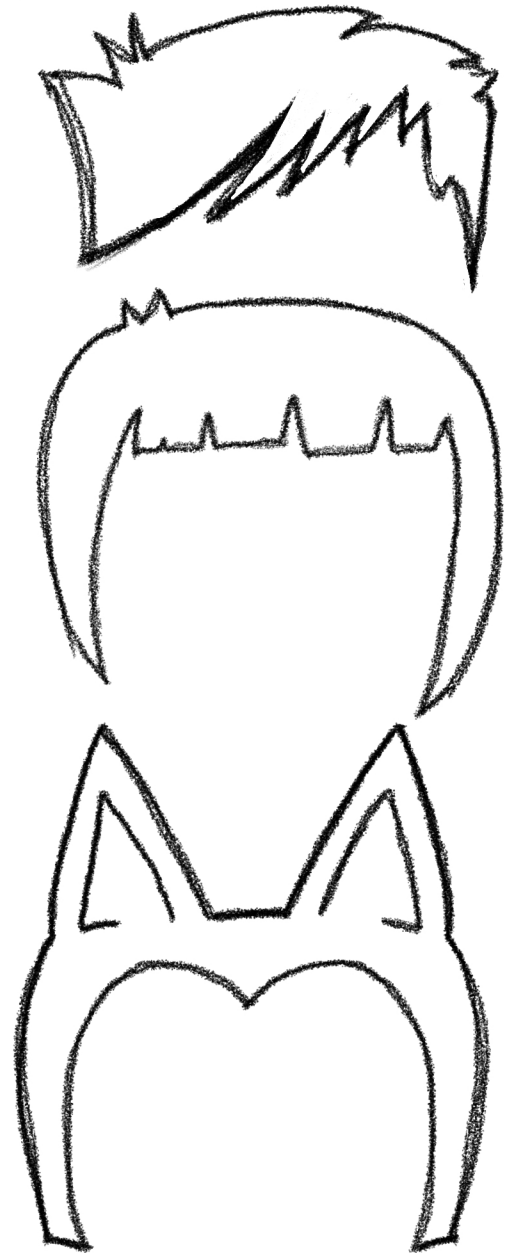
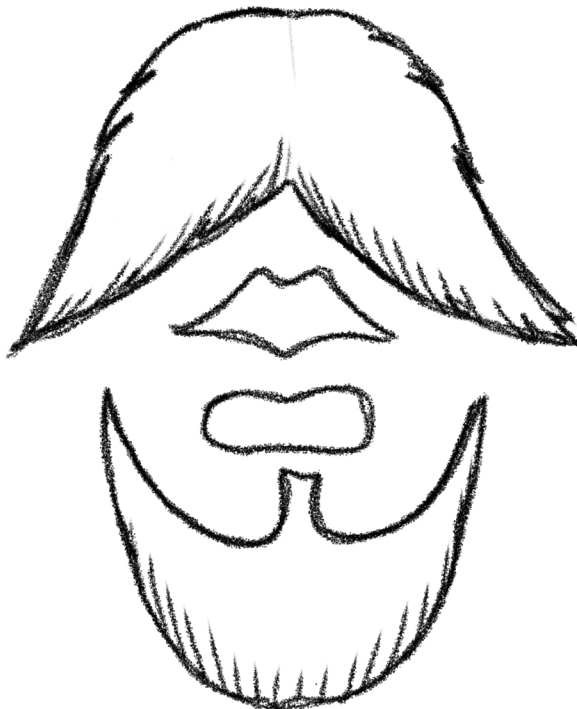
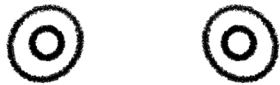
Finger loop for the Head

Box Head puppet accessories

colour in and cut out these extras to stick onto your box head puppet.

OR

Why not draw your own extras?



If you are unable to print the template to cut out, use this sheet and these measurements to draw out your own template.

